

Setting Up Your SmartScan - Apple



1 Download App

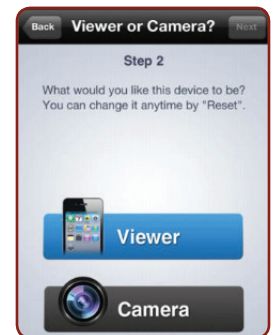


Suggested App for iPhone & iPad:
Free Wi-Fi Camera (Web of Cam)

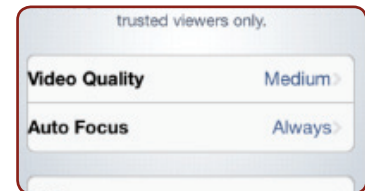
2 Setting Up Your Phone and Tablet

Designate which device is acting as the **Receiver (tablet)** and which device is acting as the **Transmitter (phone)**.

- Open the app on both devices and select the Viewer (iPad) and Camera (iPhone) - (2.1)
- **On your phone**, for improved photo quality go to Settings and adjust "Video Quality" to Medium and "Auto Focus" to Always. (2.2)
- **WiFi Connection:** this app requires a WiFi connection between the two devices. We recommend the purchase of a router for on the job efficiency. Our Service division uses the *Netgear N600 Wireless Dual Band Router*.



2.1 - Select Viewer & Camera



2.2 - Settings

3 Scan Chimney Flue



Place phone inside of SmartScan Systems, and then into the chimney flue to inspect for damage. Take photos and/or videos straight from your tablet.

If you have any questions please call us at
800.722.7230

Setting Up Your SmartScan - Android



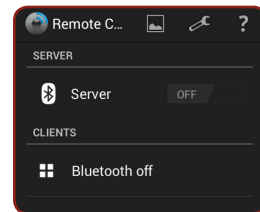
1 Download App



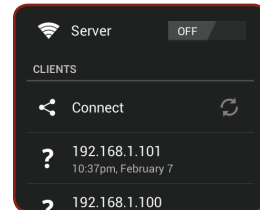
Suggested App for phone and tablet:
Remote Camera by Emparador

2 Setting Up Your Phone and Tablet

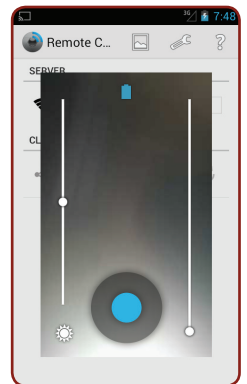
- Install app on both devices
- Open app and turn on Server (2.1) from phone.
- On your tablet, find the name or address that matches to your phone and tap on it to establish connection (2.2).
- Once connected, you view and take photos from the phone camera with controls from the tablet (2.3).
- **For improved functionality, use a router to extend your signal up the chimney**



2.1 - Turn on Server



2.2 - Connect to Phone



2.3 View and take photos

3 Scan Chimney Flue



Place phone inside of SmartScan Systems, and then into the chimney flue to inspect for damage. Take photos and/or videos straight from your Tablet.

If you have any questions please call us at
800.722.7230